

The Roadster

## WELCOME BACK OLD FRIEND

# Model-A Fords Back In Style

If you're a classic car buff with a weakness for Model A Fords, you'll be glad to know you can buy a shiny new 1931 Roadster or Phaeton that combines the best of the old with the best of the new.

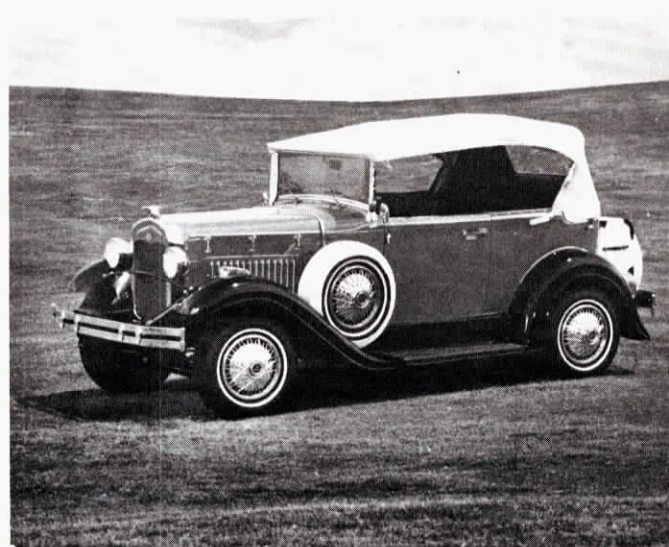
Model A Fords — 1978 style — are a specialty of Replicars, Inc., headquartered in West Palm Beach, Fla. The company builds Model A Fords said to be "perfect replicas" of the rumbleseat Roadster and Phaeton — all equipped with 135 hp. V-8 engines, power steering, power brakes, air conditioning, radio, stereo, tape deck and even a tilted steering wheel.

Each car carries a Ford warranty of

12 months or 12,000 miles. Cars weigh 2,680 lbs., measure 161 in. long, 65 in. wide and 65 in. high, and carry a price tag of \$13,900. "This is definitely not a car construction kit," a company spokesman points out. "You pay \$1,000 down, put in your order, and we handcraft the car for you."

The cars are available in a variety of exterior colors and interior upholstery in models of the Phaeton, Roadster or pickup truck.

For more details, contact: FARM SHOW Followup, Replicars, Inc., 3175 Belvedere Road, West Palm Beach, Fla. 33406 (ph 305-684-2888).



The Phaeton

## MOST MANEUVERABLE ON THE MARKET

# New Mower Floats On Cushion Of Air

Mowing lawns is literally a breeze with the revolutionary Flymo machine that floats on a cushion of air.

There are no wheels to adjust or get in the way. The mower glides along smoothly in any direction. An impeller fan draws in air and pushes it around the edge of the hood to form an air cushion on which the mower floats. The upward stream of air raises the blades of grass for even cutting.

The air cushioned mower leaves no wheel marks and needs no heavy pushing or pulling. It slides under shrubbery, along fences and over stone walks for a clean cut.

Gary Livemore, general sales manager for Flymo Products Co., the manufacturer, says the new-style mower is an original design from Sweden which was developed in England. "It has been used in the U.S. for 7 years, mainly on golf courses and athletic fields, and has withstood tough testing before recently being introduced on the consumer market."

Flymo is made in 19 and 21 in. dia. models. Both are powered by 3.8 hp., air-cooled 2-cycle gasoline engines. Because of a plastic hood and no wheels, the mower is light weight, weighing only about 30 lbs. Cutting height is adjustable to 1½ in. on the 19 in. model, and to 2½ in. on the 21 in. model.

"Our gas-powered Flymos are selling very well all over the United



States," says Livemore. "We're now getting ready to introduce an electric model which we think will be equally popular."

Will the concept be applicable to larger mowers for cutting hay and other field crops?

"The air cushion works nice in our small mowers, but we've found that when you get over 21 in. in dia., air flow creates too much torque and a twisting motion, which would make crop-size mowers of this design hard to control," explains Livemore.

Price tag on the 19 in. model is \$210, and \$220 for the 21 in. model.

For more details, contact: FARM SHOW Followup, Flymo Products Co., Woodbine Ave., Woodbridge, N.J. 07095 (ph 201-381-7000).

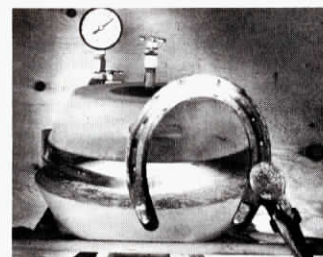
## HEATS TO 5000°F.

# New Insta-Forge for Farm Shops

The new Insta-Forge from Buffalo Blacksmith Products, Buffalo, Wyo., lights up immediately and develops a blistering temperature of about 5,000°F. with propane. "Most other gas-fired forges burn at only 2,000°," says Don Gregory, inventor.

The Insta-Forge uses no electricity or forced air heat and is quiet, non-polluting, odorless and compact. It weighs only 20 lbs. and is lined with refractory insulation which stores and reflects the intense heat. Suggested uses for it include horse shoeing, heat treating, branding, casting, welding, bending iron or machining shafts.

The unit comes complete with air fittings, 8 ft. double gas hose, tong support and oxygen gauge. Additional gauges and regulators are also available. It has a tripod base, drilled to accept a mounting bracket for portable field use on a pickup or on a



Uses for Insta-Forge include horseshoeing, branding, welding and blacksmithing.

shop bench. Suggested retail is \$325 for a cast iron model, and \$425 for a no-rust brass model, including shipping.

For more details, contact: FARM SHOW Followup, Buffalo Blacksmith Products, Box 1036, Buffalo, Wyo. 82834 (ph. 307 684-5817).